

NASH COMMUNITY COLLEGE

MEDICAL ASSISTING PROGRAM

**STUDENT
HANDBOOK**



2024-2025

**MEDICAL ASSISTING PROGRAM
2024-2025 STUDENT HANDBOOK
TABLE OF CONTENTS**

Welcome	1
Medical Assisting Program Contact Information	2
General Information	3
Nash Community College Mission	5
Medical Assisting Program Philosophy	5
Medical Assisting Program Goal	5
Program Description	5
Physical Examination, Immunizations and CPR Certification	6
Criminal Background Checks and Drug Screens	6
Technical Standards (Essential Functions)	7
Curriculum Sequence 2023 - 2024	8
Resources	9
Student Services	9
Program Costs/Financial Aid	10
Academic Dishonesty	10
Student Conduct	11
Incomplete Grades	11
College Administrative Withdrawal Policy	11
Class Scheduling	12
Student Health	12
Student Illness / Injury	12
Student Accident Insurance	13
Communicable Disease Exposure Incident Protocol	14
Inclement Weather Policy	14
Campus Safety	15
Visitors	15
Cell Phones & Smart Devices	15
Social Media Policy	15
Criminal Background and Drug Screen Due Process	16
Due Process	16
Academic and Clinical Policies	17
Grading Policy	17
Failure to Progress Policy	17
Course Evaluations	17
Program Attendance Policy	18
College Attendance and Administrative Withdrawal Statement	19
Classroom Safety	19
Clinical Practicums	19
Clinical Placement Policy	20

Student Appearance	20
Required Apparel and Supplies	22
Confidentiality and HIPAA	22
Commuting and Transportation	22
Readmission Policy	22
Transfer of Credits/Experiential Learning/ Advanced Placement	23
Pregnancy Policy	23
Medical Assisting Apprenticeship	24
AAMA Student Membership and Certification Exam Information	24
Nash Community College Student Medical Assisting Association	24
SkillsUSAR	24
AAMA Medical Assistant Code of Ethics	25
AAMA Medical Assistant Creed	25
Core Curriculum for Medical Assistants	25
Criminal Background and Drug Screen Consent Form	33
Liability Release Form	35
Video Release Form	37
Student Handbook and Policy Agreement	37
Deadlines 2023-2024	39

Welcome

You have made the choice of pursuing a diploma or degree in Medical Assisting. If you have not attended Nash Community College before, we welcome you to this campus and to this program.

The Course Sequences for the three-semester Diploma Program and five-semester Associate in Sciences Degree Program are rigorous. The Medical Assisting Advisory Committee and the Program faculty have worked diligently to plan a program that will enhance your ability to earn the credential of Certified Medical Assistant through successful certification testing, contribute as a vital team member of the health care community, and to attain personal satisfaction and growth in your chosen career.

This Student Handbook is designed to be a reference for you throughout the program by providing information about the policies and expectations of the program. Please retain this Handbook in a secure place, as you will need to refer to it from time to time during your program progression.

Always feel free to come to the faculty for clarification of policies or for answers to any additional questions you may have that are not covered in this Handbook.

Medical Assisting Program Contact Information

Nash Community College:

Medical Assisting and Phlebotomy
Instructor

Sabrina Powell, BSHSM, CMA (AAMA)
Office 2105
(252) 451-8383
slpowell890@nashcc.edu

Medical Assisting Program Director
and Practicum Coordinator

Amber Greer, BS, CMA (AAMA), PBT (ASCP)
Office 2114
(252) 451-8333
aagreer137@nashcc.edu

Health Sciences Department Chair

Andrea Milks, MS, PT, ACCE
Office 2131
(252) 451-8481
almilks594@nashcc.edu

Vice President of Instruction /
Chief Academic Officer

Amy Harrell, Ed.D.
Office 2200
(252) 451-8347
apharrell414@nashcc.edu

Health Sciences Admissions Coordinator

Kimberly Evans
Office 2130
(252) 451-8390
healthsciencesadmissions@nashcc.edu

Accreditation and Professional Organizations:

AAMA	American Association of Medical Assistants 20 North Wacker Drive, Suite 3720 Chicago, IL 60606 312-899-1500 www.aama-ntl.org
MAERB	Medical Assisting Education Review Board 2339 N. California Ave., #47138 Chicago, IL 60647 312-392-0155 www.maerb.org
CAAHEP	Commission on Accreditation of Allied Health Education Programs 9355 - 113 th St N, #7709 Seminole, FL 33775 727-210-2350 www.caahep.org
SACS-COC	Southern Association of Colleges and Schools Commission on Colleges 1866 Southern Lane Decatur, GA 30033-4097 404-679-3558 www.sacscoc.org
NCSMA	North Carolina Society of Medical Assistants www.ncsma.org

As per recommendations by the Commission on Accreditation of Allied Health Education Programs (CAAHEP), the minimum expectations of the Medical Assisting Diploma program at Nash Community College are to prepare competent entry-level medical assistants in the cognitive (knowledge), psychomotor (skills) and affective (behavior) learning domains.

Nash Community College does not unlawfully discriminate in offering equal access to its educational programs and activities or with respect to employment terms and conditions on the basis of an individual's race, color, national origin, sex, sexual orientation, gender, gender expression, gender identity, genetic information, disability age, religion, or veteran status.

Nash Community College Catalog

General Information

The Nash Community College Medical Assisting Diploma program is a three- or five-semester curriculum that prepares the student for a career as a Medical Assistant through classroom, laboratory, and clinical education. The Medical Assisting Diploma program is accredited by the Commission on Accreditation of Allied Health Education Programs (CAAHEP; www.caahep.org) upon the recommendation of the Medical Assisting Education Review Board (MAERB).

The Nash Community College Medical Assisting Associate in Applied Science Degree program is a five-semester curriculum that builds on the Diploma foundation with additional classroom and laboratory preparation in specialized Medical Assisting topics.

Nash Community College has been granted permission by the North Carolina Community College System (NCCCS) to offer these programs as outlined in the NCCCS Common Course Library. The Medical Assisting program accepted its first students in the fall of 2007. The Diploma program was awarded accreditation status by CAAHEP in March of 2010. Nash Community College is accredited by the Southern Association of Colleges and Schools commission on Colleges (SACS).

Students entering the Medical Assisting profession should understand they are entering a profession that operates according to established standards of conduct, both legal and ethical, and that by enrolling in this program they become bound by these standards. The program is not an isolated institution, but rather part of a nationwide network of healthcare that involves individual practitioners and group practices, which operate under professional, institutional, state, and federal regulations.

The policies presented in this Handbook are not to be regarded as an irrevocable contract between Nash Community College and students. The Health Sciences Department and Nash Community College reserve the right to change any policies or schedules at any time.

Successful completion of requirements for the Diploma or Associate in Applied Science Degree in Medical Assisting at Nash Community College does not convey a guarantee of success in attaining the status of Certified Medical Assistant through examination by any national agency.

Medical Assisting students are encouraged to join the American Association of Medical Assistants (AAMA) through student membership. AAMA is a local, state, and national professional organization created in association with the American Medical Associations (AMA), which is the professional organization for physicians. AAMA is especially designed to meet the needs of Medical Assistants in the rapidly and continually changing medical profession.

Graduates of CAAHEP accredited Medical Assisting programs are eligible to sit for the AAMA's Certification Examination to become Certified Medical Assistants. Employment opportunities include physician's offices, health maintenance organizations, health departments, and hospitals. Medical Assisting has been recognized by the U.S. Bureau of Labor and Statistics as among the fastest growing occupations of the next decade.

Nash Community College Mission

Nash Community College's mission is to provide an educational environment that meets students where they are and prepares them for successful and rewarding careers in a global and diverse society.

Medical Assisting Program Philosophy

The Nash Community College Medical Assisting Program fully supports and pursues the College mission by providing learner-centered, research-based learning activities including hands-on practice and collaborative learning as well as experiential learning in the clinical setting. We promote a culture of mutual respect and professionalism in the classroom that is transferable to a compassionate, patient-centered healthcare workplace. We believe it is the instructors' role to develop and assign appropriate learning activities and to serve as resources but that ultimately, learning is the responsibility of the learner.

Medical Assisting Program Goal

Nash Community College Medical Assisting Program goal is to prepare medical assistants who have the knowledge, skills, and professional behavior necessary to perform competently in entry-level positions in the surrounding community, and who are prepared to successfully complete the certifying examination of the American Association of Medical Assistants.

Program Description

The Medical Assisting curriculum prepares multi-skilled health care professionals qualified to perform administrative, clinical, and laboratory procedures. Course work includes instruction in scheduling appointments, coding and processing insurance accounts, billing, collections, computer operations; assisting with examinations/treatments, performing routine laboratory procedures, electrocardiography, supervised medication administration; and ethical/legal issues associated with patient care. Graduates completing the associate degree develop additional understanding of human disease, competencies in clinical skills, and effective communications.

Graduates of CAAHEP-accredited medical assisting programs may be eligible to sit for the American Association of Medical Assistants' Certification Examination to become Certified Medical Assistants. Employment opportunities include physicians' offices, health maintenance organizations, health departments, and hospitals.

Physical Examination, Immunizations and CPR Certification

Students accepted into the Medical Assisting Diploma program must submit items in the following list to the Practicum Coordinator by the first day of classes in January of the second semester of the program.

1. Evidence of a recent physical examination using a form provided by the College and available from the Health Sciences Admissions Coordinator. The physical exam must take place no earlier than one year prior to the Clinical Practicum, which takes place during the third semester of the Program (May-July).
2. Evidence of Immunity as follows:
 - a. Tetanus/Diphtheria: booster or TDAP within 10 years
 - b. MMR: Two doses (28 days apart) required or titer lab report indicating immunity
 - c. Hepatitis B Series: Three doses required OR signed declination waiver. Second dose minimum one month after first; third dose minimum two months after second and four months after first.
 - d. Varicella: Two doses required (28 days apart) or lab titer report indicating immunity
 - e. COVID vaccination
 - f. Two-step TB Skin test: negative result within one year of clinical experience
 - g. Annual Influenza vaccine

3. Evidence of American Heart Association (AHA) Healthcare Provider CPR certification, which will be current for the entire duration of the Clinical Practicum.

Please note: Additional requirements may be added based on clinical facility requirements. Students will be notified of changes in requirements prior to the clinical placement.

Failure to provide the required documentation by the due date may result in dismissal from the Medical Assisting program.

Criminal Background Checks and Drug Screens

Criminal background checks and drug screens are not required for admissions to the Health Sciences programs at Nash CC. However, students can expect to submit to criminal background checks (state and/or federal, which may also include fingerprint, sex offender index, social security verification, and health care fraud and abuse) and drug screens in order to meet regulatory criteria of facilities participating in the clinical education component of the Medical Assisting program once admitted to the program. The Medical Assisting faculty recognizes and is supportive of clinical facilities mandating criminal background checks and drug screens on students in the program.

If a clinical facility prohibits a Medical Assisting student from participating at the facility based on the results of the criminal background check and drug screen, the student will be dismissed from the Medical Assisting program for failure to progress. No alternative clinical experience will be arranged on behalf of the student, resulting in the inability of the student to meet the curriculum requirements of the program. Students are encouraged to follow the due process procedures for the Medical Assisting program should they feel ineligibility was determined as a result of false or inaccurate information.

Students can expect to absorb all costs related to criminal background checks and drug screens. Specific procedures will be provided to students approximately eight weeks prior to the start of the clinical experience, and applications for the criminal background check and drug screen must be completed by four weeks prior to the semester in which clinical practicums take place.

Students should also expect to submit to a criminal background check, at their own expense, when seeking eligibility for national certification.

Technical Standards (Essential Functions) of the Medical Assisting Student

Students enrolled in the Medical Assisting Program at Nash Community College must demonstrate competence in various intellectual, physical, and social areas. The Americans with Disabilities Act (ADA) ensures qualified applicants to public institutions the ability to pursue program admissions, however, the applicant must meet essential requirements. All students admitted to the Medical Assisting Program will be held to the same standards with or without reasonable accommodations. The following functions are considered essential requirements for admission, retention and graduation in Nash Community College's Medical Assisting Program. The purpose of these functions is to ensure Medical Assisting students provide safe, competent, and timely patient care.

Physical and Emotional Standards:

Medical Assisting students should possess and be able to demonstrate the following:

1. **Interpersonal Skills** – Interpersonal abilities sufficient to interact with individuals, families, and health care professionals from a variety of emotional, cultural and intellectual backgrounds. For example, the Medical Assisting student shall establish rapport with patients and the health care team members.
2. **Communication Skills** – Communication abilities sufficient for interaction with others in verbal and written form. Verbal communication must be clear and easily understood. For example, the Medical Assisting student shall interview patients to obtain an accurate medical history.
3. **Cognitive Abilities:** - Ability to be oriented to time, place, and person; organize responsibilities, and make decisions. For example, the Medical Assistant shall recognize emergency situations and be able to take effective and appropriate action.
4. **Mobility** – Physical abilities sufficient to move from room to room and maneuver in small spaces, stand and walk for extensive periods of time. For example, the Medical Assistant may make repeated trips from the reception area to patients' rooms.
5. **Motor Skills** – Gross and fine motor abilities sufficient to provide and assist with procedures safely. For example, the Medical Assisting student must be able to support patients when ambulating and assist patients in and out of a wheelchair and on and off an exam table.
6. **Hearing** – Auditory ability sufficient to monitor health needs of patients/clients. For example, the Medical Assisting student shall monitor alarms, emergency signals, and patient requests.
7. **Visual** – Visual ability sufficient to perform medical procedures and for observation skills necessary in Medical Assisting duties. For example, the Medical Assistant student must be able to read instruments, scales, charts and graphs; prepare and maintain medical records; observe the position of a needle bevel for injections and venipuncture.
8. **Tactile** – Tactile ability sufficient to manipulate medical tools and equipment and carry out medical procedures. For example, the Medical Assisting student shall identify by touch potential sites for venous punctures and distinguish between veins and other subcutaneous structures.

**Medical Assisting
Curriculum Sequence 2024 - 2025
Course and Hour Requirements**

		Class	Lab	Clin/Exp	Credit
Fall Semester					
ACA 122	College Transfer Success	0	2	0	1
BIO 163	Basic Anatomy & Physiology	4	2	0	5
ENG 111	Writing and Inquiry	3	0	0	3
MED 110	Orientation to Medical Assisting	1	0	0	1
MED 130	Admin Office Procedures I	1	2	0	2
MED 131	Admin. Office Procedures II	1	2	0	2
OST 141	Med Term I-Medical Office	3	0	0	3
OST 149	Medical Legal Issues	3	0	0	3
Semester Total					20
Spring Semester					
MED 140	Exam Room Procedures I	3	4	0	5
MED 150	Laboratory Procedures I	3	4	0	5
OST 142	Med Terms II Medical Office	3	0	0	3
PSY 150	General Psychology	3	0	0	3
Semester Total					16
Summer Semester***					
MED 260	MED Clinical Practicum	0	0	15	5
MED 262	Clinical Perspectives	1	0	0	1
Semester Total					6
Diploma Completed after Summer Semester					
Total Hours for Diploma Graduation					42
Fall Semester					
MED 240	Exam Room Procedures II	3	4	0	5
MED 270	Symptomatology	2	2	0	3
MAT 110	Mathematical Measurements	2	2	0	3
OST 148	Med. Coding, Billing & Insur.	3	0	0	3
Semester Total					14
Spring Semester					
COM 110	Intro to Communication	3	0	0	3
Hum/FA	Humanities/Fine Arts Elective	3	0	0	3
MED 274	Diet Therapy/Nutrition	3	0	0	3
OR					
OST 247	Procedure Coding	2	2	0	3
AND					
OST 248	Diagnostic Coding	2	2	0	3
MED 272	Drug Therapy	3	0	0	3
Semester Total					12-15
Total Hours for Associate Degree Graduation					68-71

Resources

The Medical Assisting classroom and lab is room 2115 in Building B. This classroom contains medical equipment and teaching aides used for learning during coursework in the program. Most of this equipment is very expensive and some is dangerous if misused. Students are prohibited from using equipment that has not been thoroughly explained during class or lab and should handle it carefully to avoid damage. Students may use equipment only after a faculty member has observed the student using the equipment safely and effectively.

Please note that it is up to students and faculty to maintain the classrooms and equipment in proper order. Materials should never be removed from the classroom or lab area without specific permission. Students will be asked to contribute to maintaining the appearance of the facilities.

Medical assisting faculty are available during scheduled office hours, which are posted outside their offices. Students may schedule appointments with faculty outside of their scheduled office hours.

The College library has many texts related to medical and health care subjects, computerized reference systems, and Internet access. Class materials may be left on reserve in the library. A copy machine is available for student use for a fee.

Student Services

There are several resources on campus to assist students with tutorial, advising, career planning, and counseling services. Please visit www.nashcc.edu, or Student Services for detailed information. Please make sure to contact your advisor or Student Services in a timely manner if you feel you might benefit from any of their services. Student Services offices are located in Building A (telephone: 252-451-8219).

The Student Wellness Center (SWELL) provides free confidential mental health services from a dually licensed clinical including treatment for Anxiety, Depression, PTSD, Autism Spectrum Disorder, Substance Use Disorder, Domestic Violence, Crisis Intervention and Safety Planning. The SWELL Center also offers support for Recovery Maintenance, Grief, Veterans, and the LGBTQAI Community.

The Student Wellness Center is located in building B, Room 2112, telephone: 252-451-8319 or email: swell@nashcc.edu.

Single Stop services include free tax preparation; benefits screening and access to financial helping resources at the national, state, and local level; financial counseling; and legal services. The Single Stop main office is located in building B, room 2111, telephone: 252-428-7334 or email: singlestop@nashcc.edu.

Program Costs/Financial Aid

Students can expect to absorb all costs related to the Medical Assisting program. Tuition and activity fees are calculated per credit hour as established by the North Carolina Legislature. The estimated cost of textbooks, uniforms and supplies, assessment testing fees, criminal background checks, drug screens, graduation fees and certification expenses is an additional \$1600.00. The program's clinical component involves travel to health care facilities in Nash County and surrounding communities. Costs of transportation and meals associated with clinical affiliations are also the student's responsibilities. *All costs identified above are intended as estimates only, and are subject to change.*

Nash Community College makes every effort to provide financial assistance, where need exists, for students whose primary goal is to acquire post-secondary education. The *College Catalog* details the

Financial Aid process and types of aid available (this can also be accessed online at www.nashcc.edu). Financial Aid awards are based upon many considerations, but primarily on demonstrated financial need of the applicant. Aid is available through several funding sources: loans, work-study employment, grants and scholarships, or a combination of these sources. Some students may receive veteran's assistance for college. Please contact the Financial Aid Office (nccfinancialaid@nashcc.edu or veterans@nashcc.edu or call 252-428-7378) for more information.

Department of Education regulations dictate to colleges what criteria must be met before financial aid awards from federal and state funds can be disbursed, including proper attendance documentation.

Academic Dishonesty

Nash Community College upholds the integrity of the academic process. Academic dishonesty undermines that integrity. Academic dishonesty includes cheating and plagiarism.

Cheating is an attempt to use unethical or dishonest means to perform work for a course. These may include, but are not limited to, copying the work of others, bringing unapproved sources of information during tests or other work ("cheat sheets," the use of information stored on electronic devices, the use of others' work on out of class assignments, etc.), and any other covert means to complete work without the approval of the instructor. Cheating encompasses both those giving and receiving aid.

Plagiarism is the undocumented use of information or the work of others presented as one's own. Nash Community College recognizes two types of plagiarism - accidental plagiarism and deliberate plagiarism.

Accidental plagiarism occurs when a student attempts to cite their sources, but does so improperly or incompletely. Nash Community College treats accidental plagiarism as poor work, and it will be graded as such.

Deliberate plagiarism occurs when a student copies the work of others or purposefully uses information from sources with no attempt to document it and presents it as their own. Nash Community College treats deliberate plagiarism as academic dishonesty.

Academic dishonesty is dealt with as follows:

1. For a first offense within a course, the student will receive a zero for the work in question. The student will be counseled by the instructor. An *Academic Dishonesty Report* form will be forwarded to the Associate Vice President of Instruction and maintained on file.
2. For a second offense within a course, the student will receive an F for the course. An *Academic Dishonesty Report* form will be forwarded to the Associate Vice President of Instruction and maintained on file.
3. Repeated offenses may lead to the recommendation of additional actions and penalties, including suspension or expulsion from the College in accordance with the *Student Dismissal, Suspension, or Expulsion Authority* procedure.
4. Additional information is presented in the *Nash Community College Academic Catalog*.

Student Conduct

Students at Nash Community College are expected to conduct themselves as responsible adults in accordance with generally accepted standards of morality and decency at all times. The Conduct Code is printed in the NCC catalog and the NCC Student Calendar. A violation of any of the listed behaviors will warrant immediate disciplinary action and may result in suspension from the College.

Eating, drinking, and use of tobacco products are prohibited in the classrooms and are limited to designated areas of clinical facilities and the college. Chewing gum or use of tobacco products is not permitted while in the clinical setting.

Students are expected to leave classrooms and labs clean and in order.

Students are expected to work with all other students, regardless of personal preferences, gender, race, creed, or national origin. Students should demonstrate respect for instructors and peers during class discussions and lab exercises. Comments and contributions to class discussions should be brief and pertinent to the discussion. Lengthy descriptions of personal and family situations are not appropriate in the classroom setting.

Incomplete Grades

An “Incomplete” in a medical assisting course must be removed before a student can continue in the program. Failure to act promptly and responsibly may result in the student being unable to enroll for subsequent (required) classes. This policy applies to all required courses identified in the Medical Assisting Curriculum Sequence.

College Administrative Withdrawal Policy

Nash Community College is an attendance taking institution with regular attendance required for all curriculum courses regardless of program, degree level, or delivery type. The attendance of students will be recorded by faculty on a regular basis and within the guidelines supported by the course’s delivery format. Attendance verification is first used to establish course enrollment within the first 10% of the course. After the 10% point of a course, faculty must administratively withdraw a student if at any point in the semester the student demonstrates two (2) consecutive weeks of nonattendance in a course. Nonattendance means missing two consecutive weeks of regularly scheduled class meetings (if applicable) in addition to no participation in any assignments or activities during that period. Students who have been approved for excused absences (field trips, medical related, etc) are still required to actively participate in class and are responsible for coordination of approved activities with the course instructor. For more information, please review the Attendance Policy and Withdrawal Policy in the College Catalog.

Official withdrawal from a required course, whether voluntary or involuntary, may leave the student unable to continue in the program. Consult a faculty advisor about available options and potential consequences prior to withdrawing from any course identified in the Curriculum Sequence.

Class Scheduling

The program faculty will assist students in dealing with matters concerning scheduling of courses. Students must not jeopardize their standing in the program by attempting schedule adjustments without consulting an advisor. The courses in the medical assisting program must be taken in sequence as outlined on the Curriculum Sequence.

Student Health

Students are encouraged to receive the Hepatitis-B vaccine as soon as possible. Students who choose not to receive the vaccine must sign a waiver form before beginning clinical learning experiences. Not receiving this vaccine may put a student’s health at risk, and potentially limit the clinical affiliations accessible to the student.

Students must maintain current AHA BLS Provider CPR certification and current medical examinations while in the Medical Assisting program. Please submit all health and CPR forms to the Medical Assisting Practicum Coordinator.

Students are not able to attend clinical facilities without current, annual documentation of CPR, tuberculosis screening, and flu vaccine. Failure to submit the proper documentation may result in clinical placement delay and/or program dismissal.

If a student is injured outside of Nash Community College or has a medical condition, including pregnancy that may affect clinical performance, the student will be required to present written documentation to continue and/or return to clinical practice. Any time missed will result in a clinical absence and the attendance policy will be in effect. The student will be expected to meet the stated objectives that are required of all students.

Student Illness / Injury

In the event of exposure to blood or body fluids, it is the responsibility of the student to arrange and pay for initial and post-exposure medical follow-up and care, and follow the College's "Student Accident Insurance" policy and procedures.

Following exposure to **blood or body fluids**, the student should take the following steps IMMEDIATELY:

1. Clean area thoroughly depending on the area exposed:
 - a. Skin exposure with blood - Wash area with antimicrobial soap and water for at least 15 seconds.
 - b. Contaminated needle stick or contaminated puncture or cut with sharp object - Wash area with antimicrobial soap and water for at least 15 seconds.
 - c. Eye exposure - Rinse/flush eye with 1000 mL of water, sterile saline, eye irrigate for at least 15 minutes.
 - d. Mucus membranes (mouth or nose) - Rinse/flush area with water.
2. Report the exposure to the preceptor and Site Supervisor immediately after taking the above preventative measures.
3. Determine the nature of the exposure and determine if there was exposure to body fluids. Assess the integrity of skin exposed to body fluids or blood.
4. Report the incident to the *employee health nurse, infection control representative, or site supervisor*. (Appropriate person for specific facility)
5. Follow the agency policy for occupational exposure, testing, or post-exposure medications as indicated. If the clinical agency does not provide baseline testing and/or prophylaxis the student will need to call his/her primary care provider or an area urgent care facility, immediately.
6. Complete appropriate incident reports or post-exposure reports for that facility with the assistance of the instructor or employee health nurse.
7. Further testing, medical follow-up and post-exposure medications will be with the student's primary physician at the student's initial expense.
8. Follow College policy for procedures and documentation required under the "Student Accident Insurance" policy.

If a student becomes ill or injured **during class**, they are to promptly report the problem to the instructor. If ill and medical attention is required, the student is responsible for the cost of medical treatment provided by their personal provider.

If injured, a Nash CC incident report must be filled out in addition to whatever is required at the facility. If necessary, the student should report to the physician or an emergency care facility. All students who register for curriculum classes are insured for accidental injuries, which may occur while in class, on college property, or while attending college sponsored internships. Students will

need to pay for treatment up front and then will be reimbursed by the College's insurance. This coverage does not apply to commuting time between home and class. All costs incurred for examination and treatment for illnesses, however, shall be the responsibility of the student.

Students are not to expect treatment for illness or injury in patient/client areas at assigned clinical facilities. (An exception to this may be in case of accidental needlestick – see Communicable Disease Exposure Incident Protocol).

Student Accident Insurance

The NCC College Catalog states that all students registered in “curriculum classes are insured for accidental injuries occurring in class or on college sponsored activities”. This includes clinical education experiences for the Medical Assisting program. Injuries during commute to and from the clinical site are not included.

If a student is injured during the clinical rotation, the faculty and student should notify the Practicum Coordinator and Medical Assisting Program director. An incident report must be filed immediately and forwarded to the Medical Assisting Program Director. If facility policy prohibits the release of the incident report, the faculty will complete the Nash Community College incident report. The incident report will be forwarded to Student Services. The student is responsible to maintain and provide all documents that relate to services and costs for care received as a result of an injury.

Should the injury include exposure to an infectious disease, the student should follow the facility's infectious/communicable disease exposure policies, in addition to the College's accidental health insurance policy, for emergent and follow-up care.

Liability Insurance is provided by Nash Community College for all Medical Assisting students. The student may elect to carry additional coverage at their discretion

Communicable Disease Exposure Incident Protocol

In keeping with current standards, requirements and recommendations of the Center of Disease Control (CDC), and the Occupational Safety and Health Act (OSHA), any student(s) involved in a possible exposure incident will follow these guidelines.

Any student injury or accident with a sharp instrument (needle stick, scalpels, glass, etc.) or with a splash of blood, body fluid, or body substance into a mucous membrane, lining of the eye, nose, or mouth, or open skin area must be reported to the Instructor and/or Program Director, and Department Chair. Both the student injured and the source from which the potential contamination has occurred (student or patient) will be informed and tested for HIV and HBV infections, after consent is obtained.

If either individual's consent is refused or if either individual tests positive, the student(s) will be evaluated clinically and by HIV antibody testing as soon as possible and advised to report and seek medical evaluation of any acute febrile illness that occurs within 12 weeks after exposure. HIV seronegative students shall be retested 6 weeks after exposure and on a periodic basis thereafter (12 weeks and 6 months after exposure).

Nash Community College will provide the following information to the evaluating physician:

- A. A copy of OSHA Standard #29 CFR 1910.1030
- B. A description of the affected student's role as they relate to the exposure

Nash Community College will also obtain and provide the student with a copy of the physician's written opinion within 15 days after completion of the evaluation. The opinion is to include the following:

- A. The physician's recommended limitations upon the student's ability to receive Hepatitis B vaccination.
- B. A statement that the student has been informed of the results of the medical evaluation and that the student has been told of any medical conditions resulting from exposure to blood or other potentially infectious materials which require further evaluation or treatment.
- C. Specific findings or diagnosis which are related to the student's ability to receive HBV vaccination. Any other findings are to be kept confidential.

Follow-up procedures will also be taken for students exposed or potentially exposed to HBV. The types of procedures depend on the immunization status of the student (whether HBV vaccine has been received and antibody response is adequate) and the HBV serologic status of the source student.

Inclement Weather Policy

When severe inclement weather interrupts the College's operating schedule, the postponements or cancellations are publicized on area television and radio stations, as well as the College's website and social media account(s). Students may also contact the College for specific information at (252) 443-4011. If the College schedule has not been affected by the weather, but a student lives in an area that has experienced severe weather, the student may want to contact the faculty.

Class time missed due to inclement weather may be made up either through independent written/online assignments or through make-up days scheduled by the instructor.

If a student is unable to attend scheduled clinical hours due to inclement weather, the student must contact the assigned Clinical Site Supervisor **and** the Practicum Coordinator at the College, following specific guidelines outlined in the Student Practicum Handbook. Students will be expected to make up missed clinical days at the discretion of the clinical facility, in consultation with the Practicum Coordinator. Remember the two most important points: 1) inform the faculty, and 2) use sound judgment to not endanger anyone (the student and others).

Campus Safety

Nash Community College is committed to providing a healthy, safe, and secure environment for all members of the campus community. Faculty, staff, and students should review the campus Emergency Plan for Nash CC posted in each classroom.

Students are encouraged to email any safety and security concerns to NashCCSafety@nashcc.edu or contact the Campus Security & Safety Director at (252) 451-8313.

Visitors

Family members/visitors may not accompany students to class, lab, or clinical facilities due to legal implications and responsibility for the safety of persons attending state supported schools/colleges. NO personal visits by anyone are allowed at the clinical facilities.

Cell Phones & Smart Devices

Use of cell phones or other electronic/smart devices during class is extremely distracting to instructors and students alike. Therefore, cell phones and other smart devices must be turned off during class or placed on vibrate. Students may leave the room to take emergency phone calls only. Texting during class is not allowed. Violations of this policy will be reflected in the student's Professional Behavior grade and may result in a notification of unprofessional behavior form.

Cellular phones, smart watches and similar smart devices are not to be taken into clinical facilities. NO personal phone calls are allowed in clinical settings except in the event of an emergency. Significant others should be instructed to contact the assigned clinical facility if an emergency arises.

Social Media Policy

Students enrolled in the program are expected to exhibit professional behaviors on- and off-campus. At no time is it acceptable for a student to verbally insult another student, college faculty, and/or associated agencies or representatives on Social Networking sites. Any student who slanders, defames, harasses, or insults another student, faculty, or any associated agency and representative will receive disciplinary action which may result in immediate dismissal from the program.

Students may post content freely to social networking sites and to those of others, so long as the content is not illegal, obscene, defamatory, threatening, infringing of intellectual property rights, invasive of privacy, or otherwise injurious or objectionable. Privacy and confidentiality laws and regulations, including federal, state, local, and institutional mandates, must be adhered to in all situations.

Students may not use the College, program, or any affiliated organization's name to endorse or promote any product, opinion, cause, or political candidate. Representation of your personal opinions as institutionally endorsed by Nash Community College or organizations associated with the Medical Assisting program is strictly prohibited.

By posting content to any social networking site, the student warrants and represents that they either own or otherwise control all of the rights to that content, including, without limitation, all the rights necessary to provide, post, upload, input, or submit the content, or that use of the content is a protected fair use. Students agree that they will not knowingly, and with intent to defraud, provide inaccurate material and misleading or false information. The student represents and warrants also that the content they supply does not violate these terms, and that the student will indemnify and hold Nash Community College and the Medical Assisting program harmless for any and all claims resulting from content they supply.

The student acknowledges that Nash Community College and the Medical Assisting program do not pre-screen or regularly review posted content, but that it shall have the right to remove, in its sole discretion, any content that it considers to violate these terms or the terms of any other campus user agreements that may govern your use of the campus networks.

Please Note: No photographic or video imaging is allowed that depicts patients or their families, clinical facilities, clinical staff or images of themselves in a clinical agency. Students must follow all policies and procedures related to the clinical facility.

Criminal Background and Drug Screen Due Process

The following procedures have been established for students who feel information contained on the criminal background check or drug screen is false or inaccurate, resulting in the inability of the

student to participate in a clinical education experience, and, therefore, dismissal from the program due to failure to progress:

1. Students will notify the Director of Medical Assisting, in writing, of their intent to initiate an investigation into the information they believe to be false or inaccurate within 24 hours of being notified of the dismissal.
2. The student will provide the Director of Medical Assisting with evidence that supports the information contained was false or inaccurate within one week (7 days) and which supports dismissal is not warranted based on the new information.
3. Students will sign a Consent to Release form allowing this new information to be provided to and reviewed by the clinical agency for their determination of eligibility to complete the clinical learning experience. Students must understand that the timeframe for the learning experience may be adjusted to reflect the contact hours needed to complete the experience.
4. Students who fail to provide this evidence within one week can follow the College's due process as stated in the *College Catalog* and summarized below.

Due Process

Students with complaints regarding disciplinary actions taken by Medical Assisting faculty or any grievance regarding the Medical Assisting program should refer to the Nash CC College catalog sections on Disciplinary Due Process and Student and Public Grievance/Complaint Procedure. Additional policies and procedures specific to the Medical Assisting program are as follows:

1. Complaints regarding the Medical Assisting curriculum or its policies and procedures should be presented to the Medical Assisting Program Director.
2. Complaints regarding the actions of a Medical Assisting Program faculty member should be directed to the faculty member involved. If the student feels uncomfortable with this, the Program Director should be contacted. If the complaint concerns the Program Director, the student should contact the Allied Health Department Chair.
3. Complaints regarding the actions of another student should be presented to the Program Director.
4. Complaints regarding clinical affiliations should be presented to the Practicum Coordinator.
5. Complaints from individuals outside the Program should be presented to the Program Director.
6. Neither the Medical Assisting Program nor Nash Community College will review anonymous grievances or grievances sent electronically or through facsimile transmission.

Under no circumstances is it acceptable to verbalize complaints against Nash Community College, the Medical Assisting Program faculty or Director, or other Medical Assisting students while in clinical rotation facilities. A student found to have engaged in this behavior may be dismissed from the program.

Academic and Clinical Policies

Grading Policy

The grading system outlined in the Nash Community College catalog will be followed. It reads:

- A = 90-100 %
- B = 80-89 %
- C = 70-79 %
- D = 60-69 %
- F = Below 60 %

Additional information regarding grading that is specific to each course will be provided to students in the course syllabi.

In order to earn a passing grade in each of the Medical Assisting (MED) courses, the student must demonstrate mastery of all of the CAAHEP defined psychomotor and affective competencies listed for that course. Administrative and clinical competencies require a check-off format, which includes a time limit for successful completion of the competency. A grade of 80% or greater must be achieved within the stated time limit on each competency checklist in order to pass the course in which the competency is demonstrated. Students will be given an opportunity to repeat failed competencies two times; competencies must be repeated within one week after grades are posted. Five points will be deducted from the grade achieved for each subsequent attempt.

Failure to Progress Policy

In addition to the general institutional academic policies described in the *College Catalog*, the Medical Assisting Program adheres to the following standards:

1. In order for courses to be accepted for credit in the Medical Assisting program, the following minimum grades must be achieved:

Medical Assisting courses (MED prefix):	80% or greater
MED Practicum (MED 260):	S (Satisfactory)
All other required courses:	C or greater
2. Students admitted into the Medical Assisting program must maintain an overall grade point average of 2.000 or greater to maintain their admission status as well as to remain in satisfactory academic standing for progression through the Medical Assisting program.

Failure to achieve the above minimum grades, maintain the minimum GPA, or failure to complete any courses required after admission into the program is grounds for dismissal.

Course Evaluations

For seated and online courses, students will be evaluated according to each individual course syllabus. In addition, each MED course in the Diploma program will use a standardized Professional Behavior Scoresheet to evaluate students on behaviors expected in the healthcare workplace. The Professional Behavior Score Sheets are an important learning tool, particularly for those students with limited workplace experience.

Students are awarded a grade of either “S” for Satisfactory or “U” for Unsatisfactory for the Clinical Practicum experience. Grades are determined by evaluations completed by the Site Supervisor in conjunction with other staff members who have served as preceptors.

Program Attendance Policy

The attendance policies in health science courses are designed to help students develop behaviors that are desirable in a working environment, therefore students are expected to conduct themselves as they would on the job. Regular and punctual attendance in seated classes and participation in online classes is expected and is an obligation of all students. Additionally, students are expected to engage and participate in class discussions, whether seated or online. Students who are drowsy or inattentive are not engaged and may be asked to leave the classroom.

For a student to receive the optimum benefit of course instruction, regular class activity is required and recorded by the instructor. For seated classes, students are expected to arrive on time and stay for the duration of each class; attendance will be recorded by the instructor at the beginning of every class. Students must participate in online courses, at minimum, on a weekly basis. Failure to do so will be marked as an absence. Upon failure to participate in any course in a 14-day window, the instructor is required to withdraw students from the course.

An excused absence occurs when the instructor is able to determine without doubt that the absence was unavoidable. The College further stipulates that an excused absence is an absence for which the student is held harmless and for which the instructor provides the student the opportunity to make up any tests, exams, assignments, or other work missed as a result of the absence. The excused absence shall still be recorded as an absence for attendance purposes. The instructor may require

proof of absence such as a doctor's note or police report. Excused absences due to deaths are limited to immediate family only. For this purpose, immediate family is defined as spouse, parents, children, brother, sister, grandparents and grandchildren. Also included are the step-, half-, and in-law relationships of the same degree of relationship as listed above.

Additional attendance requirements are placed on the laboratory portions of courses in which critical manual skills are acquired; specifically MED 140 and MED 150. A student missing over five lab periods of 2 hours each (approximately 15% of the total lab time in each course) will receive a grade of F in the course. Be aware that some class days consist of lab only and count as two lab periods.

Tardiness is extremely unprofessional and will not be tolerated. Students are expected to be seated and ready to engage in classroom activities at the start of the class session. A student who arrives at or after the start time, is gathering materials or is storing personal items after the instructor has begun, is disruptive and will be recorded as tardy. Chronic tardiness (more than twice per month) will result in progressive disciplinary action, leading to and including dismissal from the Medical Assisting program.

1. Students should inform the course instructor ahead of time if class is going to be missed (an email or voice mail to the course instructor is both effective and efficient).
2. Students should arrange all routine appointments and activities so as not to conflict with classroom experiences.
3. Students with family care responsibilities should arrange for back-up care in the event of situations such as public school closings or illness of family members or caregivers.
4. Legitimate reasons for tardiness, i.e. transportation issues, should be brought to the attention of the instructor.
5. When asked, the instructor will provide the opportunity to make up work missed due to an excused absence. It is the student's sole responsibility for seeking those assignments and other missed work from the instructor.

College Attendance and Administrative Withdrawal Statement

Nash Community College is an attendance taking institution with regular attendance required for all curriculum courses regardless of program, degree level, or delivery type. The attendance of students will be recorded by faculty on a regular basis and within the guidelines supported by the course's delivery format.

Attendance verification is first used to establish course enrollment within the first 10% of the course. After the 10% point of a course, faculty must administratively withdraw a student if at any point in the semester the student demonstrates two (2) consecutive weeks of nonattendance in a course. Nonattendance means missing two consecutive weeks of regularly scheduled class meetings (if applicable) in addition to no participation in any assignments or activities during that period. Students who have been approved for excused absences (field trips, medical related, etc.) are still required to actively participate in class and are responsible for coordination of approved activities with the course instructor.

For more information, please review the Attendance Policy and Withdrawal Policy in the [College Catalog](#).

Classroom Safety

Student safety is a very real concern in the Medical Assisting classroom as true hazards exist. Medical Assisting course content includes instruction in all appropriate safety precautions prior to exposure to hazards. Students are expected to apply all safety precautions learned in the course to situations in the classroom and clinical facilities. The following safety precautions are enforced:

1. NO food or beverages are allowed in the classroom

2. Students are required to wear closed toe shoes and all personal protective equipment (PPE) appropriate to the procedures being performed, including disposable fluid-resistant lab coats and disposable gloves. PPE must be removed prior to leaving the classroom.
3. Students are instructed in the location and use of emergency equipment such as eyewash stations, fire extinguishers, and first aid kits.
4. Current Safety Data Sheets are maintained in the classroom.
5. All sharps and biohazardous materials are disposed of according to OSHA regulations.
6. Classroom surfaces are regularly disinfected.
7. The classroom contains a variety of equipment that could be dangerous if used incorrectly. Students must not attempt to use any equipment without thorough instruction in safe use.
8. All equipment is checked for safety on an annual basis and the program maintains records of maintenance and repair. Students should report any problems or damage to the instructor immediately.

Clinical Practicums

During the summer (third semester) of the Medical Assisting program, students will attend a clinical practicum at an affiliated healthcare facility in eastern North Carolina. Students must have successfully completed MED 131, MED 140, and MED 150 prior to beginning the clinical practicum. Students are required to attend 240 hours at their assigned clinical site. This is typically accomplished by scheduling three eight-hour days per week for ten weeks. In addition, students will participate in a one credit hour seminar course each week during the clinical experience.

Affiliated clinical facilities require students to submit to a criminal background check and a drug screen within one month prior to the clinical experience. These will be performed through a College-selected third party. Additional information and instructions will be provided during the spring semester, prior to the clinical practicum.

Students will be asked to prepare a resume one month prior to the semester in which clinical practicums take place. Additional policies governing attendance and grading specific to the Practicum experience are described in the Student Practicum Booklet.

Clinical Placement Policy

Nash Community College admits students to the Medical Assisting program based upon the projected number of Clinical Practicum positions available at contracted clinical facilities. It is always possible that unforeseen circumstances may arise during the year which would limit the number of positions available. If not enough clinical sites are available to accommodate all students in a given cohort, selection of students for placement will be made based upon the students' current MED core class average at the time of assignment. Every attempt will be made to place students left without clinical assignments into a facility during the early part of the following semester, but this cannot be guaranteed. Students would then be given preference for placement in the next available MED 260 class. The prerequisite of MED 260/262 for second year MED courses would be waived.

Student Appearance

As professional behavior is a desired outcome for graduates of the Medical Assisting program, students are expected to dress and conduct themselves professionally both while on Nash Community College campus and at clinical sites.

Students dressed inappropriately may be asked to leave the classroom, in which case the absence would be considered unexcused. Clinical faculty will dismiss students who are not appropriately dressed. Dress codes will apply during individual and group make-up procedures/times.

During class or clinical periods when **street clothes** are allowed:

1. Fingernails must not extend beyond the fingertips; must be even in length, clean and filed smoothly; only clear polish is acceptable. Artificial nails are a health hazard and are not allowed for students in the campus laboratory setting or the clinical setting *regardless of facility policy*.
2. Students must avoid wearing clothing that is revealing, dirty or worn out. No holes, patches, or tears.
3. Dress must be conservative; **no cleavage or midriff is to be exposed; no undergarments should be observable. Sleeveless shirts must have straps at least 2" wide for classrooms**; sleeveless shirts are not appropriate for clinical facilities.
4. No articles of clothing that display controversial or offensive messages or symbols are allowed.
5. Clothing must be properly fitted (not too tight or too large; not touching floor)
6. No hats, hoods or other headwear (except for religious reasons). Hair ties are limited to white, black, or similar to hair color and must be conservative. Any additional accessories are limited to bobby pins or small clips that must blend in with hair color.
7. Jewelry worn in the nose, eyebrow, tongue, or other visible pierced body part besides the ear **is not allowed**. For clinical facilities, jewelry must be conservative and is limited to one post earring per ear and wedding bands only.
8. Thong-type sandals are not allowed at the clinical facilities.

The following specific guidelines apply to students when **uniforms** are required: (while attending MED 140, MED 150, MED 240, and during Clinical Practicums):

1. Fingernails must not extend beyond the fingertips; must be even in length, clean and filed smoothly; only clear polish is acceptable. Artificial nails are a health hazard and are not allowed for students in the campus laboratory setting or the clinical setting *regardless of facility policy*.
2. Personal hygiene must be maintained. Body or breath odor, and strong perfume are unacceptable. Personal hygiene is essential to acceptable interpersonal activities such as those engaged in by the professional Medical Assistant. Particular care must be given to skin, hair, bathing, proper oral hygiene, and use of antiperspirant.
3. Tattoos must be covered.
4. Hair must not fall in the eyes or below the collar of the uniform. Long hair must be pulled back and pinned up so it does not fall loosely over shoulders and face. Hair must be kept clean and manageable. Hair must be a natural color and neatly and conservatively styled. Hair that is artificially colored should be maintained so that no obvious roots or grown-out areas are visible. Beards, mustaches, and sideburns must be groomed neatly.
5. No hats, hoods or other headwear (except for religious reasons) are allowed. Hair ties are limited to white, navy, or similar to hair color and must be conservative. Any additional accessories are limited to bobby pins or small clips that must blend in with hair color.
6. Jewelry worn in the nose, eyebrow, tongue, or other visible pierced body part besides the ear is not allowed. Jewelry must be conservative and is limited to one post earring per ear and wedding bands only.
7. Scrub-type uniforms are required as described in the Required Apparel section that follows. Uniforms must be properly fitted (not too tight or too large; not touching floor), clean and neatly pressed. No cleavage or midriff is to be exposed; no undergarments other than white or skin tone should be observable.
8. Nash Community College logo patches are to be purchased through the bookstore and attached to the left shoulder of both the scrub top and the lab jacket, 1 ½" below the shoulder seam.
9. A professional style, white, closed-toed shoe must be worn. Shoes must be clean and polished.
10. Clean white crew socks or hose may be worn under pants. Ankles are not to be exposed.
11. Name/identification badges are essential to dress as they identify students to patients, patient's family members, visitors, and members of the healthcare team. Students are required to wear their badges at all times while in clinical practice. Badges must be worn

above the waist and displayed so that the information noted on the badge is always visible (not covered or reversed). Badges should not be covered with pins, ornaments, stickers, or any other objects. Instructors and clinical site supervisor(s) may prohibit a student from participating in clinical practice without their badge(s).

Business casual dress may include dress slacks, khaki pants, skirts, dresses, blouses, polo shirts, or shirts with a collar but no necktie. During the administrative portion of the Practicum experience when **business casual** clothes are allowed:

1. Students must avoid wearing clothing that is revealing, dirty, or worn out. No holes, patches, or tears.
2. Denim or jeans pants of any color or style, sweat pants, leggings, warm-up/wind suits, sweatshirts, and logo t-shirts are not allowed.
3. Undergarment apparel should not be visible outside or through clothing.
4. Shorts or Capri style pants are not allowed.
5. Dresses or skirts can be worn but should not be more than 2 inches above the knee.
6. Tops should not be tight or revealing.
7. Dress sandals and open toed shoes can be worn in the administrative areas only. Thong sandals of any kind are not allowed.
8. Fingernails must not extend beyond the fingertips. They should be clean and filed smoothly and only clear polish is acceptable.
9. No hats, hoods or other headwear (except for religious reasons) are allowed.
10. Jewelry worn in the nose, eyebrow, tongue, or other visible pierced body part besides the ear is not allowed. Jewelry must be conservative and is limited to one post earring per ear and wedding bands only.
11. Name/identification badges are essential to dress as they identify students to patients, patient's family members, visitors, and members of the healthcare team. Students are required to wear their badges at all times while in clinical practice. Badges must be worn above the waist and displayed so that the information noted on the badge is always visible (not covered or reversed). Badges should not be covered with pins, ornaments, stickers, or any other objects. Instructors and clinical site supervisor(s) may prohibit a student from participating in clinical practice without their badge(s).

Required Apparel and Supplies

Uniforms and equipment are required while participating in on-campus courses beginning in the second semester and in Clinical Practicums. All students (first and second year) must have the following uniform and equipment:

1. Navy blue scrub pants
2. White scrub top
3. White lab jacket with elastic cuffs
4. Closed-toe, solid plastic or leather white uniform shoes (no mesh or fabric)
5. Nash Community College logo patch
6. Stethoscope
7. Manual blood pressure cuff
8. Student name/identification badge (required for Clinical Practicum only)

Please note: Specific brand, style, and color must be purchased to ensure uniformity of style and color. Do not purchase without additional information, which will be provided by the instructor.

Confidentiality and HIPAA

HIPAA stands for the Health Insurance Portability and Accountability Act of 1996. HIPAA requires health care providers to follow certain rules to protect patient information. This information may be written, spoken, or electronically produced. Information that is protected under HIPAA includes identifiable patient information such as name, address, photos, and insurance account numbers. Students may come in contact with patient records, financial records, reports, memos, and contracts. HIPAA requires students to limit internal use of protected patient information to the

minimum necessary. Students must only access patient information appropriate for patient care. Students are not permitted to view or disclose information to family members, friends, or health care providers that are not involved in the patient's care. Students should not give information to outside sources or ask for information from outside sources. Students are not to make unauthorized copies of confidential information. Students should not dispose of any confidential information unless told to do so. Confidential medical documents must be shredded. Any violation of HIPAA may result in disciplinary action by the clinical facility and/or Department Chair/ Practicum Coordinator leading to dismissal from the Medical Assisting Program. There are also legal penalties, fines, and imprisonment for violating HIPAA.

Commuting and Transportation

A variety of facilities are utilized for Clinical Practicums. Every effort will be made to match students with facilities closest to their homes, but students must understand this is not always possible and **commuting times may exceed one hour**. Students must have reliable transportation with back-up arrangements. Failure of transportation is not a valid excuse to miss clinical hours.

Readmission Policy

The following policy describes the conditions under which a student who exits the Program without satisfying all of its requirements may return to the Program to resume progress toward the Diploma in Medical Assisting or the Associate in Applied Science in Medical Assisting degree.

1. A student who fails to complete the MED program as scheduled may reapply to the program by meeting the admissions criteria that are in effect at the time of reapplication.
2. Re-entry into the program is not guaranteed and will be considered on a case by case basis considering the point of re-entry, the number of currently enrolled students at the point of re-entry, and confirmed space availability for clinical education learning experiences.
3. The applicant will be required to demonstrate retention of knowledge and skills in MED technical courses by successfully completing both a written proficiency examination and laboratory competency examination for each prerequisite course to the point of re-entry, regardless of an original passing grade for the course.

The requirement to demonstrate retention of knowledge and skills may be waived in the case of a Nash CC Diploma graduate requesting re-entry at the associate degree level if one of the following conditions have been met:

- a. The applicant has passed the AAMA certification exam at any time in the past and is currently employed as a medical assistant, OR
 - b. The applicant has passed the AAMA certification exam within the previous six months
4. A student dismissed from the program as a result of inappropriate internet use; misconduct or unprofessional behavior during on- and off-campus learning activities; non-adherence to laboratory safety and clinical education policies; or significant concerns in regard to clinical expectations for safety, ethical, and legal standards will not be considered for re-entry to the MED program or subsequent admission to any other health sciences program at Nash Community College.

Transfer of Credits/Experiential Learning/ Advanced Placement

The Medical Assisting program at Nash Community College accepts transfer of credits for MED technical courses from institutions within North Carolina provided that the medical assisting program at the college at which the credits were earned was accredited by the Commission on Accreditation of Allied Health Education Programs (CAAHEP) at the time the courses were taken. Credits earned at another institution, whether MED core courses or general education courses, must meet the same grade standards as courses taken at Nash Community College in order to apply toward the Diploma or Associate in Applied Sciences in Medical Assisting.

The Medical Assisting program does not give credit for experiential learning toward the Diploma or Associate in Applied Sciences in Medical Assisting.

The Medical Assisting program accepts Advanced Placement credit for English (ENG 111) and Psychology (PSY 150) toward the Diploma or Associate in Applied Sciences in Medical Assisting as described in the Nash CC Academic Catalog. Advanced Placement credits are not accepted for any other courses required for the Diploma or Associate in Applied Sciences in Medical Assisting.

An applicant who wishes to transfer successfully completed MED technical courses required for the Diploma or Associate in Applied Sciences in Medical Assisting from another CAAHEP accredited program may be considered for entry to the program by meeting the admissions criteria that are in effect at the time of application with the following considerations:

1. Transfer into the program is not guaranteed and will be considered on a case by case basis considering the point of entry, the number of currently enrolled students at the point of entry, and space availability for confirmed clinical education learning experiences.
2. Applicants will be required to demonstrate retention of knowledge and skills for MED technical courses previously completed if more than one year has elapsed since completion of the course. Retention will be demonstrated by successfully completing both a written proficiency examination and laboratory competency examination for each course to the point of re-entry regardless of an original passing grade for the course.
3. Per Nash Community College Graduation Requirements, a minimum of 25 percent of the required semester credit hours of the Diploma or Associate in Applied Sciences in Medical Assisting must be earned at Nash Community College.

Pregnancy Policy

1. Upon declaration of pregnancy by the student to the program director or faculty, general program policies will be reviewed in detail in order to provide the student with a complete understanding of their status in the program.
2. The pregnant student must follow the established program policies and meet the same clinical and educational criteria as all other students before recommendation for the clinical practicum and graduation.
3. If the student chooses to leave the program during their pregnancy, they will be eligible for reinstatement into the program upon completion of their pregnancy leave. Re-entry will be based on the program's readmission policy.
4. **If the student remains in the MED program during their pregnancy, they accept full responsibility for their actions and relieve Nash Community College, its faculty, and practicum affiliates of any responsibilities in case of adverse effects.**

Medical Assisting Apprenticeship

The Medical Assisting program at Nash Community College has a Registered Apprenticeship program in cooperation with the U.S. Department of Labor Office of Apprenticeship and approved by the North Carolina Community College (NCCCS) System Office. Local participating employers partner with the Program to provide on-the-job training, as required by the apprenticeship. Participating employers interview Medical Assisting students in the spring of the diploma program and make student selections for whom to extend apprenticeship opportunities. Nash Community College's faculty do not make recommendations nor selections to the participating employers regarding apprentices. All students, regardless of apprenticeship status, are required to meet the Medical Assisting Program and accreditation requirements for completion of the program.

AAMA Student Membership and Certification Exam Information

The American Association of Medical Assistants (AAMA) is a local, state, and national professional organization created in association with the American Medical Associations (AMA), which is the professional organization for physicians. AAMA is especially designed to meet the needs of Medical Assistants in the rapidly and continually changing medical profession. The mission of the AAMA is to enable medical assisting professionals to enhance and demonstrate the knowledge, skills and

professionalism required by employers and patients; protect medical assistants' right to practice; and promote effective, efficient health care delivery through optimal use of the CMA (AAMA).

Student memberships are available at a discount and include a subscription to the Medical Assistant Today, a professional magazine devoted to Medical Assisting. For more information, visit the website www.aama-ntl.org.

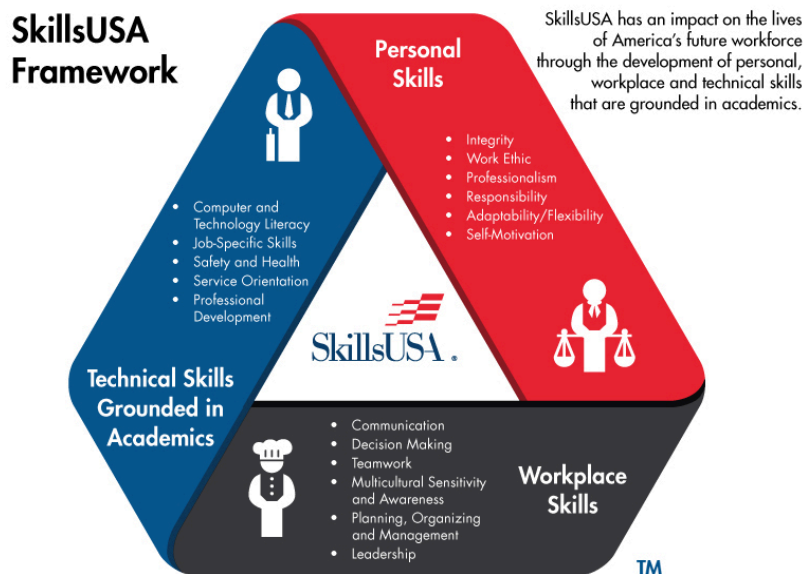
Nash Community College Student Medical Assisting Association

Pre-Medical Assisting students as well as those already accepted into the Medical Assisting program are encouraged to join the Student Medical Assisting Association, which operates under guidelines provided by the AAMA. The SMAA exists to help prepare students for careers in Medical Assisting by encouraging knowledge and skill growth; developing leadership, advocacy, and critical thinking skills; and by encouraging and developing active participation in local and state levels of NCSMA and AAMA.

SkillsUSA^R

SkillsUSA^R is a partnership of students, teachers and industry working together to ensure America has a skilled workforce. SkillsUSA helps each student excel by providing educational programs, leadership opportunities, events and competitions that support career and technical education (CTE). Students enrolled in the Medical Assisting program at Nash Community College are automatically enrolled in the Nash CC SkillsUSA Chapter and are invited to attend regular chapter meetings.

The SkillsUSA Framework is a nationally created and recognized set of 17 skills. The skills are in 3 categories of personal, workplace and technical skills grounded in academics to address technical and soft skill training. The Medical Assisting curriculum at Nash CC is consistent with the three components of the SkillsUSA Framework.



AAMA Medical Assistant Code of Ethics

The Code of Ethics of the American Association of Medical Assistants shall set forth principles of ethical and moral conduct as they relate to the medical profession and the particular practice of medical assisting. Members of AAMA dedicated to the conscientious pursuit of their profession, and thus desiring to merit the high regard of the entire medical profession and the respect of the general public which they serve, do pledge themselves to strive always to:

- A. render service with full respect for the dignity of humanity;
- B. respect confidential information obtained through employment unless legally authorized or required by responsible performance of duty to divulge such information;
- C. uphold the honor and high principles of the profession and accept its disciplines;
- D. seek to continually improve the knowledge and skills of medical assistants for the benefit of patients and professional colleagues;
- E. participate in additional service activities aimed toward improving the health and well-being of the community.

AAMA Medical Assistant Creed

I believe in the principles and purposes of the profession of medical assisting.

I endeavor to be more effective.

I aspire to render greater service.

I protect the confidence entrusted to me.

I am dedicated to the care and well-being of all people.

I am loyal to my employer.

I am true to the ethics of my profession.

I am strengthened by compassion, courage and faith

Core Curriculum for Medical Assistants
Medical Assisting Education Review Board (MAERB)
2022 Curriculum Requirements

Individuals graduating from Medical Assisting programs accredited by the Commission on Accreditation of Allied Health Education Programs (CAAHEP) must demonstrate knowledge of the subject matters required for competence in the medical assisting profession. They must incorporate the cognitive (C) knowledge in performance of the psychomotor (P) skills and the affective (A) behaviors.

FOUNDATIONS FOR CLINICAL PRACTICE	
CONTENT AREA I-IV	
Content Area I: Anatomy, Physiology, & Pharmacology	
Cognitive (Knowledge) I.C Anatomy, Physiology, & Pharmacology	Psychomotor (Skills) I.P Anatomy, Physiology, & Pharmacology
<ol style="list-style-type: none"> 1. Identify structural organization of the human body 2. Identify body systems* 3. Identify: <ol style="list-style-type: none"> a. body planes b. directional terms c. quadrants d. body cavities 4. Identify major organs in each body system* 5. Identify the anatomical location of major organs in each body system* 6. Identify the structure and function of the human body across the lifespan 7. Identify the normal function of each body system* 8. Identify common pathology related to each body system* including: <ol style="list-style-type: none"> a. signs b. symptoms c. etiology d. diagnostic measures e. treatment modalities 9. Identify Clinical Laboratory Improvement Amendments (CLIA) waived tests associated with common diseases 10. Identify the classifications of medications including: <ol style="list-style-type: none"> a. indications for use b. desired effects c. side effects d. adverse reactions 11. Identify quality assurance practices in healthcare 	<ol style="list-style-type: none"> 1. Accurately measure and record <ol style="list-style-type: none"> a. blood pressure b. temperature c. pulse d. respirations e. height f. weight (adult and infant) g. length (infant) h. head circumference (infant) i. oxygen saturation 2. Perform the following procedures: <ol style="list-style-type: none"> a. electrocardiography b. venipuncture c. capillary puncture d. pulmonary function testing 3. Perform patient screening following established protocols 4. Verify the rules of medication administration: <ol style="list-style-type: none"> a. right patient b. right medication c. right dose d. right route e. right time f. right documentation 5. Select proper sites for administering parenteral medication 6. Administer oral medications 7. Administer parenteral (excluding IV) medications 8. Instruct and prepare a patient for a

<p>12. Identify basic principles of first aid</p> <p>13. Identify appropriate vaccinations based on an immunization schedule.</p> <p>*Body systems must include, but are not limited to, the following: Circulatory, Digestive, Endocrine, Integumentary, Lymphatic, Muscular, Nervous, Sensory, Reproductive, Respiratory, Skeletal, and Urinary.</p>	<p>procedure or a treatment</p> <p>9. Assist provider with a patient exam</p> <p>10. Perform a quality control measure</p> <p>11. Collect specimens and perform:</p> <ol style="list-style-type: none"> CLIA waived hematology test CLIA waived chemistry test CLIA waived urinalysis CLIA waived immunology test CLIA waived microbiology test <p>12. Provide up-to-date documentation of provider/professional level CPR</p> <p>13. Perform first aid procedures</p> <ol style="list-style-type: none"> bleeding diabetic coma or insulin shock stroke seizures environmental emergency syncope
Content Area II: Applied Mathematics	
Cognitive (Knowledge) II.C Applied Mathematics	Psychomotor (Skills) II.P Applied Mathematics
<p>1. Define basic units of measurement in:</p> <ol style="list-style-type: none"> the metric system the household system <p>2. Identify abbreviations used in calculating medication dosages</p> <p>3. Identify normal and abnormal results as reported in:</p> <ol style="list-style-type: none"> graphs tables 	<p>1. Calculate proper dosages of medication for administration</p> <p>2. Record laboratory test results into the patient's record</p> <p>3. Document on a growth chart</p> <p>4. Apply mathematical computations to solve equations</p> <p>5. Convert among measurement systems</p>
Content Area III: Infection Control	
Cognitive (Knowledge) III.C Infection Control	Psychomotor (Skills) III.P Infection Control
<p>1. Identify major types of infectious agents</p> <p>2. Identify the infection cycle including:</p> <ol style="list-style-type: none"> the infectious agent reservoir susceptible host means of transmission portals of entry portals of exit <p>3. Identify the following as practiced within an ambulatory care setting:</p> <ol style="list-style-type: none"> medical asepsis surgical asepsis <p>4. Identify methods of controlling the growth of microorganisms</p>	<p>1. Participate in bloodborne pathogen training</p> <p>2. Select appropriate barrier/personal protective equipment (PPE)</p> <p>3. Perform handwashing</p> <p>4. Prepare items for autoclaving</p> <p>5. Perform sterilization procedures</p> <p>6. Prepare a sterile field</p> <p>7. Perform within a sterile field</p> <p>8. Perform wound care</p> <p>9. Perform dressing change</p> <p>10. Demonstrate proper disposal of biohazardous material</p>

<p>5. Identify the principles of standard precautions</p> <p>6. Identify personal protective equipment (PPE)</p> <p>7. Identify the implications for failure to comply with Centers for Disease Control (CDC) regulations in healthcare settings</p>	<p>a. sharps</p> <p>b. regulated wastes</p>
Content Area IV: Nutrition	
Cognitive (Knowledge) IV. C Nutrition	Psychomotor (Skills) IV. P Nutrition
<p>1. Identify dietary nutrients including:</p> <ul style="list-style-type: none"> a. carbohydrates b. fat c. protein d. minerals e. electrolytes f. vitamins g. fiber h. water <p>2. Identify the function of dietary supplements</p> <p>3. Identify the special dietary needs for:</p> <ul style="list-style-type: none"> a. weight control b. diabetes c. cardiovascular disease d. hypertension e. cancer f. lactose sensitivity g. gluten-free h. food allergies i. eating disorders <p>4. Identify the components of a food label</p>	<p>1. Instruct a patient regarding a dietary change related to patient’s special dietary needs</p>
Content Area V: Concepts of Effective Communication	
Cognitive (Knowledge) V.C Concepts of Effective Communication	Psychomotor (Skills) V.P. Concepts of Effective Communication
<p>1. Identify types of verbal and nonverbal communication</p> <p>2. Identify communication barriers</p> <p>3. Identify techniques for overcoming communication barriers</p> <p>4. Identify the steps in the sender-receiver process</p> <p>5. Identify challenges in communication with different age groups</p> <p>6. Identify techniques for coaching a patient related to specific needs</p> <p>7. Identify different types of electronic technology used in professional communication</p>	<p>1. Respond to nonverbal communication</p> <p>2. Correctly use and pronounce medical terminology in health care interactions</p> <p>3. Coach patients regarding:</p> <ul style="list-style-type: none"> a. office policies b. medical encounters <p>4. Demonstrate professional telephone techniques</p> <p>5. Document telephone messages accurately</p> <p>6. Using technology, compose clear and correct correspondence</p> <p>7. Use a list of community resources to facilitate referrals</p> <p>8. Participate in a telehealth interaction with a</p>

<p>8. Identify the following related to body systems*:</p> <ol style="list-style-type: none"> a. medical terms b. abbreviations <p>9. Identify the principles of self-boundaries</p> <p>10. Identify the role of the medical assistant as a patient navigator</p> <p>11. Identify coping mechanisms</p> <p>12. Identify subjective and objective information</p> <p>13. Identify the basic concepts of the following theories of:</p> <ol style="list-style-type: none"> a. Maslow b. Erikson c. Kubler-Ross <p>14. Identify issues associated with diversity as it relates to patient care</p> <p>15. Identify the medical assistant's role in telehealth</p> <p>*Body systems must include, but are not limited to, the following: Circulatory, Digestive, Endocrine, Integumentary, Lymphatic, Muscular, Nervous, Sensory, Reproductive, Respiratory, Skeletal, and Urinary.</p>	<p>patient</p>
Content Area VI: Administrative Functions	
Cognitive (Knowledge) VI.C Administrative Functions	Psychomotor (Skills) VI.P Administrative Functions
<ol style="list-style-type: none"> 1. Identify different types of appointment scheduling methods 2. Identify critical information required for scheduling patient procedures 3. Recognize the purpose for routine maintenance of equipment 4. Identify steps involved in completing an inventory 5. Identify the importance of data back-up 6. Identify the components of an Electronic Medical Record, Electronic Health Record, and Practice Management system 	<ol style="list-style-type: none"> 1. Manage appointment schedule using established priorities 2. Schedule a patient procedure 3. Input patient data using an electronic system 4. Perform an inventory of supplies
Content Area VII: Basic Practice Finances	
Cognitive (Knowledge) VII.C Basic Practice Finances	Psychomotor (Skills) VII.P Basic Practice Finances
<ol style="list-style-type: none"> 1. Define the following bookkeeping terms: <ol style="list-style-type: none"> a. charges 	<ol style="list-style-type: none"> 1. Perform accounts receivable procedures to patient

<ul style="list-style-type: none"> b. payments c. accounts receivable d. accounts payable e. adjustments f. end of day reconciliation <p>2. Identify precautions for accepting the following types of payments:</p> <ul style="list-style-type: none"> a. cash b. check c. credit card d. debit card <p>3. Identify types of adjustments made to patient accounts including:</p> <ul style="list-style-type: none"> a. non-sufficient funds (NSF) check b. collection agency transaction c. credit balance d. third party <p>4. Identify patient financial obligations for services rendered</p>	<p>accounts including posting:</p> <ul style="list-style-type: none"> a. charges b. payments c. adjustments <p>2. Input accurate billing information in an electronic system</p> <p>3. Inform a patient of financial obligations for services rendered</p>
---	---

Content Area VIII: Third-Party Reimbursement

<p>Cognitive (Knowledge) VIII.C Third-Party Reimbursement</p>	<p>Psychomotor (Skills) VIII.P Third-Party Reimbursement</p>
---	--

<p>1. Identify:</p> <ul style="list-style-type: none"> a. types of third-party plans b. steps for filing a third-party claim <p>2. Identify managed care requirements for patient referral</p> <p>3. Identify processes for:</p> <ul style="list-style-type: none"> a. verification of eligibility for services b. precertification/preauthorization c. tracking unpaid claims d. claim denials and appeals <p>4. Identify fraud and abuse as they relate to third party reimbursement</p> <p>5. Define the following:</p> <ul style="list-style-type: none"> a. bundling and unbundling of codes b. advanced beneficiary notice (ABN) c. allowed amount d. deductible e. co-insurance f. co-pay <p>6. Identify the purpose and components of the Explanation of Benefits (EOB) and Remittance Advice (RA) Statements</p>	<p>1. Interpret information on an insurance card</p> <p>2. Verify eligibility for services</p> <p>3. Obtain precertification or preauthorization with documentation</p> <p>4. Complete an insurance claim form</p> <p>5. Assist a patient in understanding an Explanation of Benefits (EOB)</p>
---	---

Area IX: Procedural and Diagnostic Coding

<p>Cognitive (Knowledge) IX.C Procedural and Diagnostic Coding</p>	<p>Psychomotor (Skills) IX.P Procedural and Diagnostic Coding</p>
--	---

<p>1. Identify the current procedural and</p>	<p>1. Perform procedural coding</p>
---	-------------------------------------

<p>diagnostic coding systems, including Healthcare Common Procedure Coding Systems II (HCPCS Level II)</p> <ol style="list-style-type: none"> 2. Identify the effects of: <ol style="list-style-type: none"> a. upcoding b. downcoding 3. Define medical necessity 	<ol style="list-style-type: none"> 2. Perform diagnostic coding 3. Utilize medical necessity guidelines
Content Area X: Legal Implications	
Cognitive (Knowledge) X.C Legal Implications	Psychomotor (Skills) X.P Legal Implications
<ol style="list-style-type: none"> 1. Identify scope of practice and standards of care for medical assistants 2. Identify the provider role in terms of standard of care. 3. Identify components of the Health Insurance Portability & Accountability Act (HIPAA) 4. Identify the standards outlined in The Patient Care Partnership 5. Identify licensure and certification as they apply to healthcare providers 6. Identify criminal and civil law as they apply to the practicing medical assistant 7. Define: <ol style="list-style-type: none"> a. negligence b. malpractice c. statute of limitations d. Good Samaritan Act(s) e. Uniform Anatomical Gift Act f. living will/advanced directives g. medical durable power of attorney h. Patient Self Determination Act (PSDA) i. risk management 8. Identify the purpose of medical malpractice insurance 9. Identify legal and illegal applicant interview questions 10. Identify: <ol style="list-style-type: none"> a. Health Information Technology for Economic and Clinical Health (HITECH) Act b. Genetic Information Nondiscrimination Act of 2008 (GINA) c. Americans with Disabilities Act Amendments Act (ADAAA) 11. Identify the process in compliance reporting: <ol style="list-style-type: none"> a. unsafe activities b. errors in patient care c. conflicts of interest d. incident reports 12. Identify compliance with public health 	<ol style="list-style-type: none"> 1. Locate a state’s legal scope of practice for medical assistants 2. Apply HIPAA rules in regard to: <ol style="list-style-type: none"> a. privacy b. release of information 3. Document patient care accurately in the medical record 4. Complete compliance reporting based on public health statutes 5. Report an illegal activity following the protocol established by the healthcare setting 6. Complete an incident report related to an error in patient care

<p>statutes related to:</p> <ul style="list-style-type: none"> a. communicable diseases b. abuse, neglect, and exploitation c. wounds of violence <p>13. Define the following medical legal terms:</p> <ul style="list-style-type: none"> a. informed consent b. implied consent c. expressed consent d. patient incompetence e. emancipated minor f. mature minor g. subpoena duces tecum h. respondeat superior i. res ipsa loquitur j. locum tenens k. defendant-plaintiff l. deposition m. arbitration-mediation 	
Content Area XI: Ethical and Professional Considerations	
Cognitive (Knowledge) XI.C Ethical and Professional Considerations	Psychomotor (Skills) XI.P Ethical and Professional Considerations
<ol style="list-style-type: none"> 1. Define: <ul style="list-style-type: none"> a. ethics b. morals 2. Identify personal and professional ethics 3. Identify potential effects of personal morals on professional performance 4. Identify professional behaviors of a medical assistant 	<ol style="list-style-type: none"> 1. Demonstrate professional response(s) to ethical issues
Content Area XII: Protective Practices	
Cognitive (Knowledge) XII.C Protective Practices	Psychomotor (Skills) XII.P Protective Practices
<ol style="list-style-type: none"> 1. Identify workplace safeguards 2. Identify safety techniques that can be used in responding to accidental exposure to: <ul style="list-style-type: none"> a. blood b. other body fluids c. needle sticks d. chemicals 3. Identify fire safety issues in an ambulatory healthcare environment 4. Identify emergency practices for evacuation of a healthcare setting 5. Identify the purpose of Safety Data Sheets (SDS) in a healthcare setting 6. Identify processes for disposal of <ul style="list-style-type: none"> a. biohazardous waste and b. chemicals 	<ol style="list-style-type: none"> 1. Comply with safety practices 2. Demonstrate proper use of: <ul style="list-style-type: none"> a. eyewash equipment b. fire extinguishers 3. Use proper body mechanics 4. Evaluate an environment to identify unsafe conditions

- | | |
|--|--|
| <ul style="list-style-type: none">7. Identify principles of:<ul style="list-style-type: none">a. body mechanicsb. ergonomics8. Identify critical elements of an emergency plan for response to a natural disaster or other emergency9. Identify the physical manifestations and emotional behaviors on persons involved in an emergency | |
|--|--|

AFFECTIVE SKILLS	
-------------------------	--

- | | |
|---|--|
| <ul style="list-style-type: none">A.1 Demonstrate critical thinking skillsA.2 Reassure patientsA.3 Demonstrate empathy for patients' concernsA.4 Demonstrate active listeningA.5 Respect diversityA.6 Recognize personal boundariesA.7 Demonstrate tactfulnessA.8 Demonstrate self-awareness | |
|---|--|

**Nash Community College
Medical Assisting Program**

Criminal Background and Drug Screen Consent Form

Students can expect to submit to a criminal background check (state and/or federal) and drug screen in order to meet regulatory criteria of facilities participating in the clinical education component of the Medical Assisting Program. The Medical Assisting Program recognizes and is fully supportive of clinical facilities mandating criminal background checks and/or drug screens on students in the program.

If a clinical facility prohibits a student in the Medical Assisting Program from participating at the facility based on the results of the criminal background check and/or drug screen, the student will be dismissed from the Medical Assisting Program. No alternative clinical experience will be arranged on behalf of the student, resulting in the inability of the student to meet the curriculum requirements of the Medical Assisting Program.

Students can expect to absorb all costs related to criminal background checks and/or drug screens. Specific procedures will be provided to students in the Medical Assisting Program at the appropriate time in the curriculum sequence.

Students should also expect to submit to a criminal background check when seeking eligibility for employment in North Carolina (and other states).

By signing below, I understand criminal background checks and/or drug screens are required of all NCC Medical Assisting Program students, in order to progress through clinical education courses.

I will follow the Program's policies and procedures regarding criminal background checks and/or drug screens.

Student Name (print)

Telephone Number

Student Signature

Date

**Note: This page should be signed and submitted to the Medical Assisting faculty.*

(This page left intentionally blank)

**Nash Community College
Medical Assisting Program**

Liability Release Form

I, _____, understand that I am voluntarily participating in Medical Assisting Courses, which include Examination Room Procedures I and II, and Laboratory Procedures I. I understand the instructor will teach and guide me in correct techniques and procedures including but not limited to performing ECGs, giving injections and collecting blood samples. It is my responsibility to follow instructions and learn the correct methods of use for all techniques and procedures.

I understand that I will be expected to work with all other students, regardless of personal preferences, gender, race, creed, or national origin, and that I must demonstrate professional behavior and respect for instructors and peers during class discussions and lab exercises.

Lab practice components of the NCC Medical Assisting program includes students practicing on and with each other. I understand other students will practice various procedures including performing ECGs, giving injections on various body locations, as well as collecting blood samples from veins located in my hands, arms, and fingers using various venipuncture and dermal puncture devices after appropriate instruction and practice on manikins.

I agree not to hold Nash Community College, the instructor, or any student liable for any damages or pain that may occur to me as a result of practice.

Student Signature

Date

Witness Signature

Date

Instructor Signature

Date

**Note: This page should be signed and submitted to the Medical Assisting faculty.*

(This page left intentionally blank)

**Nash Community College
Medical Assisting Program**

Video Release Form

As part of the educational experiences at Nash Community College, students may be asked to photo or video tape one another for the purpose of demonstrating or critiquing Medical Assisting skills, etc. The College may also request your permission to use your photos or videos for promotional purposes.

This form should only be completed once during the Medical Assisting program and maintained in the student's academic file.

I, the undersigned, understand the requirement for videotaping laboratory activities. I agree to allow Nash Community College nursing to view and store video and photographic images as related to the Medical Assisting curriculum and required course and laboratory activities.

Printed Name: _____

Student Signature & Date: _____

Current Residence City and State: _____

**Note: This page should be signed and submitted to the Medical Assisting faculty.*

(This page left intentionally blank)

**Nash Community College
Medical Assisting Program**

Student Handbook and Policy Agreement

I have reviewed the ALL sections of the Nash Community College *Medical Assisting Student Handbook*, have been given the opportunity to have them explained in further detail, understand them, and agree to comply with them.

In addition, I agree to comply with these specific items:

(Initial EACH item)

- ___ Welcome, General Information
- ___ Advising/Student Support Services
- ___ Attendance/Grading Policies
- ___ Clinical Placement Policy
- ___ Student Conduct Policy
- ___ Social Media Policy
- ___ Academic Dishonesty (Cheating and Plagiarism)
- ___ Failure to Progress and Dismissal Policy
- ___ Readmission Policy
- ___ Due Process and Complaints
- ___ Campus and Classroom Safety
- ___ Criminal Background and Drug Screen Check
- ___ Student Appearance
- ___ Required Apparel and Supplies
- ___ Confidentiality and HIPAA
- ___ Commuting and Transportation
- ___ Documentation of Physical Exam and Immunizations
- ___ Documentation of Provider-Level CPR

Print Name: _____

Signature: _____ Date: _____

**Note: This page should be signed and submitted to Medical Assisting faculty*

(This page left intentionally blank)

Nash Community College Medical Assisting Program

Deadlines 2024-2025

October 1, 2024	Gather immunization records. Start immunization series for Hepatitis B and/or Varicella. Schedule Medical Exam.
Oct. – Nov. 2024	Submit medical records and CPR documentation.
January 9, 2025	Uniforms required – ALL components including shoes and jackets. No admittance to class without full uniform.
January 9, 2025	<u>FINAL DEADLINE</u> : Medical Exam, Immunization, and CPR Documentation.
April 1, 2025	Clinical Resume
April 15, 2025	Criminal Background Check and Drug Screen Application
May 23, 2025	Diploma Graduation Application DUE